

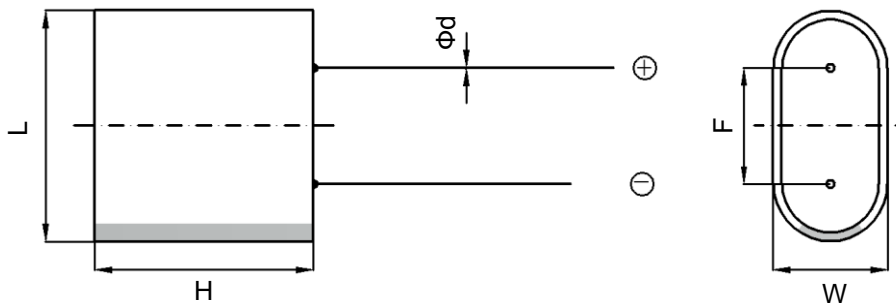
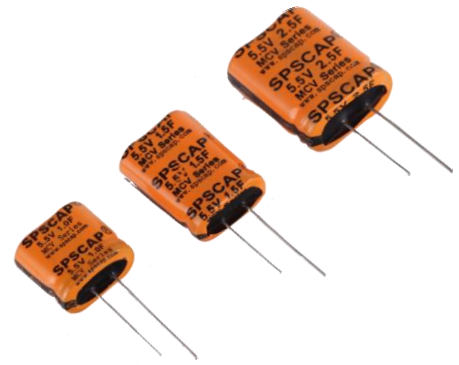
### Feature

- High power performance
- Low ESR
- Over 500,000 duty cycles
- Lead terminal

### Application

- Hybrid battery packs
- Pulse power
- Bridge or hold-up power
- Valve and solenoid actuation

### Dimension



Part Number	Dimension (mm)				
	$L \pm 0.5$	$W \pm 0.5$	$H \pm 1$	$F \pm 0.5$	$d \pm 0.05$
MCV0000C5-0005R5LTN	16.5	8	13.5	12	0.5
MCV0001C0-0005R5LTN	16.5	8	15	12	0.5
MCV0001C5-0005R5LTN	16.5	8	22.5	12	0.5

**Specification**

Item	Specifications
Working Voltage	5.5 VDC
Surge Voltage	5.8 VDC
Working Temp. Range	-40°C to 65°C
Capacitance Tolerance	-10% to +40% (25°C)
Temp. Characteristic (-40°C to 65°C)	$\Delta C \leq$ Initial measured value 30% ESR $\leq$ Specified value 200%
Life (1,000 hours @ 65°C, 5.5 VDC)	$\Delta C \leq$ Initial measured value 30% ESR $\leq$ Specified value 200%
Cycle Life (Cycle between rated voltage and 1/2 rated voltage for 500,000 times)	$\Delta C \leq$ Initial measured value 30% ESR $\leq$ Specified value 200%

**Standard Product**

Part Number	Cap. (F)	ESR (m $\Omega$ ) (1kHz)	LC (mA) (RT 72hrs)	Energy Stored (Wh)	Energy Density (Wh/Kg)	Rated Current (A) ( $\Delta C=15^\circ C$ )	Peak Current (A)	Mass (g)
MCV0000C5-0005R5LTN	0.5	500	0.008	0.002	0.8	0.46	1.20	2.5
MCV0001C0-0005R5LTN	1	280	0.01	0.004	1.33	0.61	1.39	3.0
MCV0001C5-0005R5LTN	1.5	220	0.01	0.006	1.67	0.74	2.30	3.6